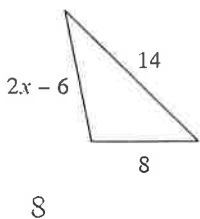
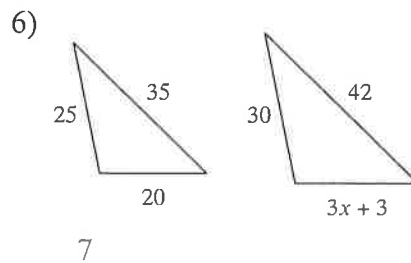
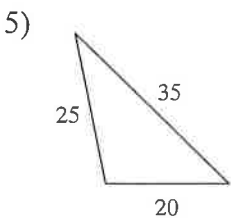
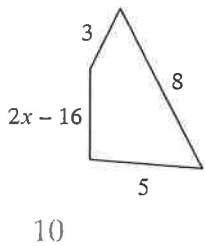
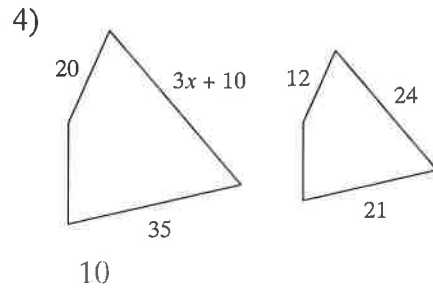
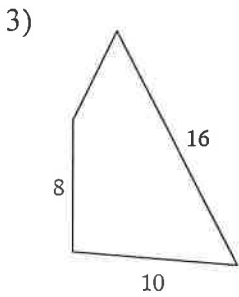
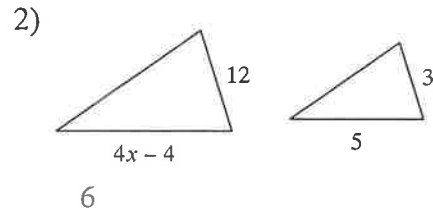
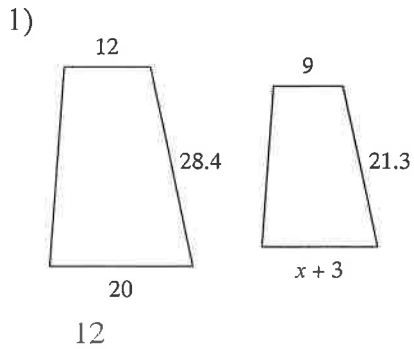


Similarity and Measurement

Solve for  $x$ . The polygons in each pair are similar.



7) A man is standing next to a cactus. The man is 5.5 ft tall and casts a 2 foot shadow. The cactus casts an 8 foot shadow. How tall is the cactus?

22 ft

8) A woman is standing next to the flagpole. The woman is 6 ft tall and her shadow is 18 inches long. The shadow of the flagpole is 12 feet long. How tall is the flagpole?

48 ft