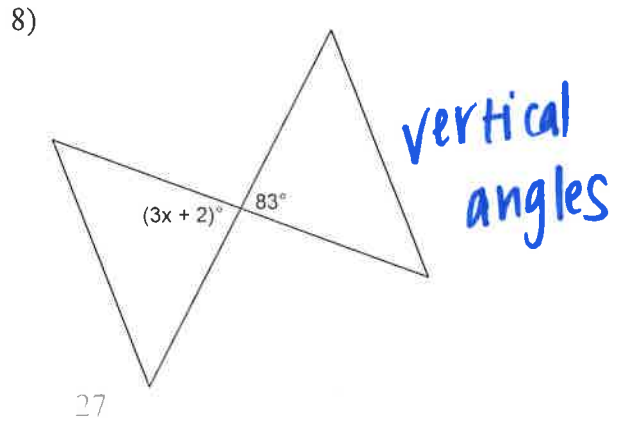
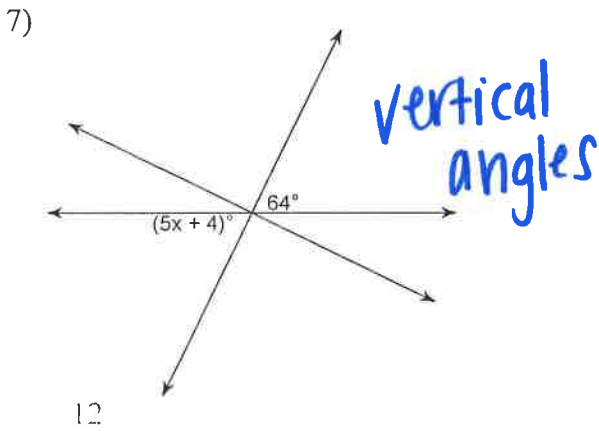
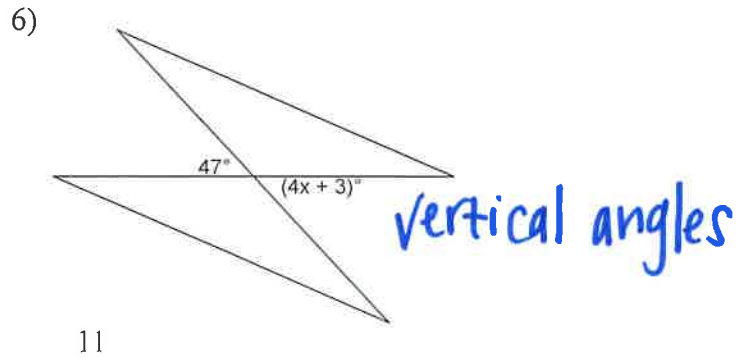
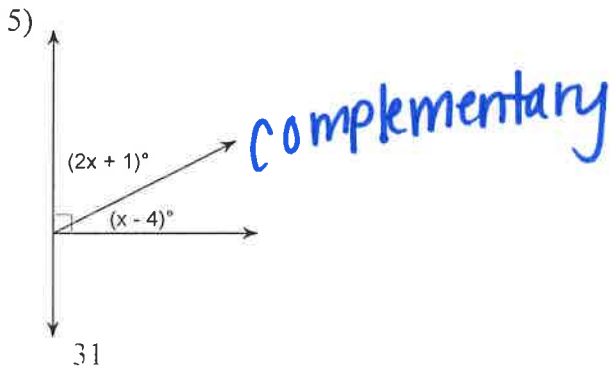
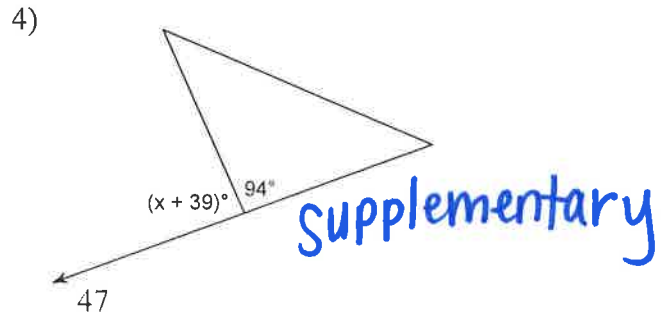
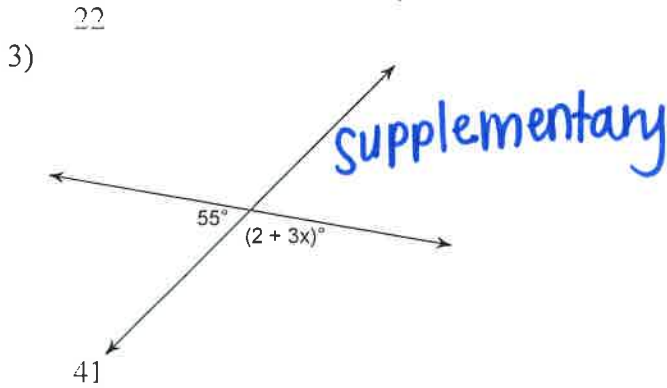
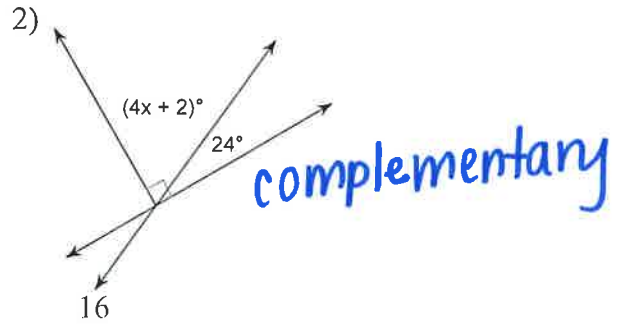
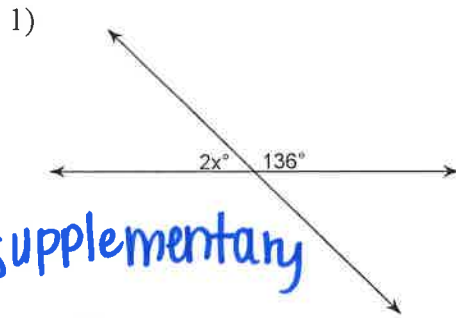
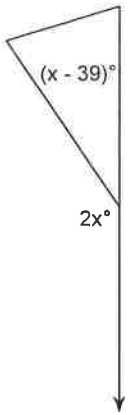


Pre-Algebra

State the relationship between the angles given. Find the value of x.



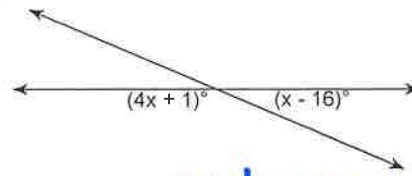
9)



Supplementary

73

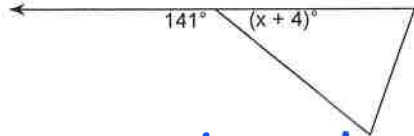
10)



39

Supplementary

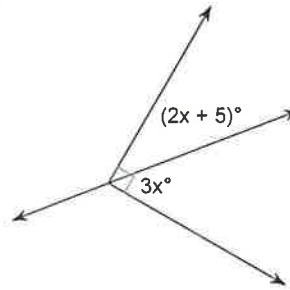
11)



35

Supplementary

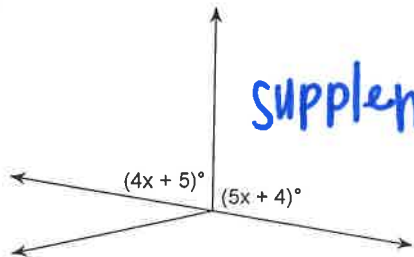
12)



17

complementary

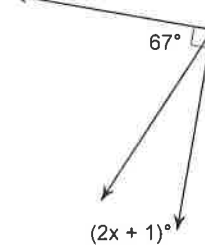
13)



19

Supplementary

14)



11

complementary

Classify each angle as acute, obtuse, right, or straight.

15)  $90^\circ$

right

16)  $161^\circ$

obtuse

17)  $120^\circ$

obtuse

18)  $27^\circ$

acute

19)  $180^\circ$

straight